

EJACULATION DISORDERS

Discontinuation of Dapoxetine Treatment in Patients With Premature Ejaculation: A 2-Year Prospective Observational Study



Hyun Jun Park, MD, PhD,¹ Nam Cheol Park, MD, PhD,¹ Tae Nam Kim, MD,¹ Seung Ryong Baek, MD,¹ Kyung Min Lee, MS,¹ and Sangmin Choe, MD, PhD²

ABSTRACT

Introduction: Although dapoxetine is the only oral pharmacologic agent approved for the treatment of premature ejaculation (PE) and is very effective, the discontinuation rate is high.

Aim: To assess the discontinuation rate of patients with PE and the reasons for discontinuation in real-world practice.

Methods: In total, 182 consecutive patients were enrolled. Type of PE, self-estimated intravaginal ejaculation latency time, and medical history were evaluated in all patients who also completed the erectile function domain of the International Index of Erectile Function (IIEF). Visits were scheduled 1, 3, 6, 12, and 24 months after initiation of therapy; treatment status and the reasons for discontinuation in those who did discontinue were checked. The relations of discontinuation rates were compared with various parameters and the time to discontinuation after treatment commencement.

Results: Of all patients, 9.9% continued treatment to 2 years. The cumulative discontinuation rates at 1, 3, 6, 12, and 24 months were 26.4%, 61.6%, 79.1%, 87.3%, and 90.1%, respectively. Moreover, 79.1% of all patients discontinued treatment within 6 months. After 12 months, the discontinuation rate decreased sharply. The reasons for discontinuation were cost (29.9%), disappointment that PE was not curable and that dapoxetine was required every time sexual intercourse was contemplated (25%), side effects (11.6%), perceived poor efficacy (9.8%), a search for other treatment options (5.5%), and unknown (18.3%). Patients with acquired PE (vs lifelong PE), with intravaginal ejaculation latency time longer than 2 minutes before treatment, on phosphodiesterase type 5 inhibitors, and with IIEF erectile function scores lower than 26 tended to discontinue early and thus exhibited high dropout rates.

Conclusion: The treatment discontinuation rate of dapoxetine was very high. The main reasons for discontinuation were the cost and disappointment that treatment was required every time adequate sexual function was required. **Park HJ, Park NC, Kim TN, et al. Discontinuation of Dapoxetine Treatment in Patients With Premature Ejaculation: A 2-Year Prospective Observational Study. Sex Med 2017;5:e99–e105.**

Copyright © 2017, The Authors. Published by Elsevier Inc. on behalf of the International Society for Sexual Medicine. This is an open access article under the CC BY-NC-ND license (<http://creativecommons.org/licenses/by-nc-nd/4.0/>).

Key Words: Premature Ejaculation; Serotonin Uptake Inhibitors; Compliance

INTRODUCTION

Premature ejaculation (PE) is one of the most common male sexual dysfunctions. PE decreases sexual satisfaction and the quality of life of patients and their partners.¹ Recently, the

International Society for Sexual Medicine defined PE is a “male sexual dysfunction characterized by ejaculation that always or nearly always occurs prior to or within 1 min of vaginal penetration from the time of the first sexual experience (lifelong PE), or a clinically significant reduction in latency time, often to about 3 minutes or less (acquired PE).”² Currently, several treatments for PE are available. Psychological-behavioral pharmacologic therapies, including selective serotonin reuptake inhibitors (SSRIs), tricyclic antidepressants, tramadol, phosphodiesterase type 5 (PDE5) inhibitors, and α_1 -adrenergic receptor antagonists; topical anesthetics; and even surgery have been used to treat PE in real-world practice.³ Dapoxetine is the first oral pharmacologic agent developed to treat PE and is the only SSRI approved for such treatment in more than 60 countries.⁴ The introduction of dapoxetine was associated with high expectations, given the

Received January 14, 2017. Accepted February 28, 2017.

¹Department of Urology and Medical Research Institute, Pusan National University Hospital, Pusan National University School of Medicine, Busan, Korea;

²Department of Clinical Pharmacology and Therapeutics, Pusan National University Hospital, Busan, Korea

Copyright © 2017, The Authors. Published by Elsevier Inc. on behalf of the International Society for Sexual Medicine. This is an open access article under the CC BY-NC-ND license (<http://creativecommons.org/licenses/by-nc-nd/4.0/>).

<http://dx.doi.org/10.1016/j.esxm.2017.02.003>

optimal efficacy-safety profiles evident in phase 3 trials.⁵ However, although several clinical studies have confirmed drug efficacy in increasing the intravaginal ejaculation latency time (IELT) and safety, the rate of discontinuation is as high as when taking off-label SSRIs.^{4,5} The discontinuation rate is high compared with those of PDE5 inhibitors in patients with erectile dysfunction (ED).^{4,6}

To date, dapoxetine is the only approved medical treatment for PE; no second-line therapy is available in those who do not respond or who refuse to take dapoxetine. Thus, a comprehensive evaluation of factors leading to dropout was needed, especially in a real-practice setting. Therefore, we assessed dapoxetine discontinuation by patients with PE in a clinical setting, and the reasons for such discontinuation, over a follow-up period of 2 years.

METHODS

Study Design

This was a 2-year prospective observational study conducted in a single clinical center in accordance with Good Clinical Practice and in conformity with the ethical principles of the Declaration of Helsinki. The local ethics committee approved the study protocol and all patients signed informed consent forms.

At baseline, all patients were asked to self-estimate their IELT using a stopwatch, completed the International Index of Erectile Function erectile function domain (IIEF-EFD), and gave a medical history. The IELT was defined as the time from the start of vaginal intromission to commencement of intravaginal ejaculation.⁷ According to the new definition of the International Society of Sexual Medicine,² lifelong PE was defined as ejaculation that always or nearly always occurred before or within approximately 1 minute of vaginal penetration, commencing at the first sexual experience, and acquired PE was defined as a clinically significant and bothersome decrease in latency time, often to no longer than 3 minutes. The two types of PE have been associated with an inability to delay ejaculation after all or nearly all vaginal penetrations and associated with negative personal consequences, including distress, worry, frustration, and/or avoidance of sexual intimacy.

Subjects

In total, 182 consecutive patients seeking medical treatment for PE were enrolled. The inclusion criteria were male sex, no history of dapoxetine treatment, age older than 19 years, and involvement in a stable monogamous relationship with a female sexual partner.

Men with the following conditions were excluded: any anatomic penile deformity; spinal cord injury; prior radical prostatectomy; pelvic organ surgery; diagnosis of any sexual disorder other than ED; any uncontrolled psychiatric disorder; any history of a major hematologic, renal, or hepatic abnormality; a history of alcoholism or substance abuse; and/or an organic illness limiting the ability to take SSRIs. Patients did not receive any financial incentive to participate in this observational

survey. Concomitant use of any other PE treatment was prohibited during the study period.

Outcome Measurements

After a 4-week run-in period, patients took dapoxetine 30 mg 1 to 3 hours before planned sexual intercourse. Dose escalation to 60 mg was allowed after 1 month if the 30-mg dose was inadequate. Patients were re-evaluated 1, 3, 6, 12, and 24 months after initiating therapy for treatment status and the reason for discontinuation if they had discontinued. If a patient missed any visit, then he was contacted by telephone or mail to collect the required data. The primary end points were the discontinuation rates and the reasons for discontinuation. We compared the discontinuation rates with various parameters and the interval from commencement to discontinuation.

Statistical Analyses

We undertook a prospective cohort study. We compared the baseline characteristics of patients continuing and discontinuing treatment using the χ^2 test to evaluate categorical variables. A *P* value less than 0.05 was considered statistically significant. All statistical analyses were performed using SPSS 15.0 for Windows (SPSS Inc, Chicago, IL, USA).

RESULTS

We consecutively enrolled 182 patients from October 1, 2011 through September 30, 2013. The mean age of all patients was 38.2 years (range = 19–63) and the mean baseline IELT was 61.2 ± 23.4 seconds. Of all patients, 9.9% continued treatment to 2 years. The cumulative discontinuation rates at 1, 3, 6, 12, and 24 months were 26.4%, 61.6%, 79.1%, 87.3%, and 90.1%, respectively. Moreover, 79.1% of all patients discontinued treatment within 6 months. After 12 months, the discontinuation rate decreased sharply (Figure 1). Patients with acquired PE (vs lifelong PE), with IELTs longer than 2 minutes before treatment, on PDE5 inhibitors, and with IIEF-EFD scores lower than 26 tended to exhibit high dropout rates at the end of the study (Table 1). The reasons for discontinuation were cost (29.9%), disappointment that PE was not curable and that dapoxetine was needed whenever sex was planned (25%), side effects (11.6%), perceived inefficacy (9.8%), a search for other treatment options (5.5%), and unknown (18.3%; Table 2). The most common side effects included yawning, nausea, dizziness, and headache. No severe side effects, such as self-harming or aggressive behavior, serotonin syndrome, postural hypotension, or syncope, were reported.

DISCUSSION

Before the introduction of dapoxetine, off-label SSRIs, topical anesthetics, and the narcotic analgesic tramadol were the only medical agents used to treat PE. The discontinuation rates in patients with PE were very high.^{7,8} Salonia et al⁷ found that up

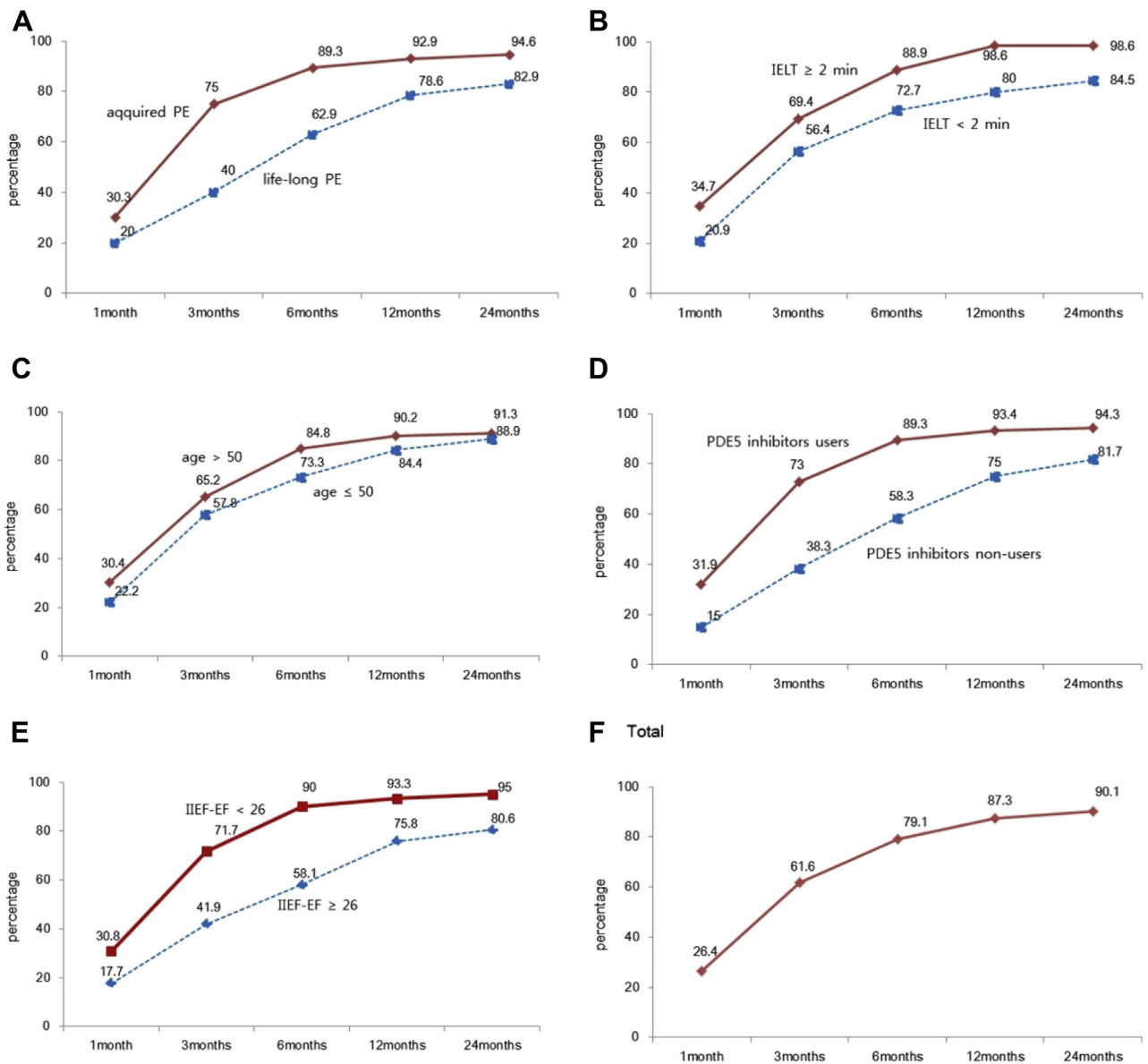


Figure 1. Cumulative discontinuation rates. Panel A shows acquired PE vs lifelong PE. Panel B shows IELT at least 2 vs shorter than 2 minutes. Panel C shows age older than 50 vs no older than 50 years. Panel D shows users of PDE5 inhibitors vs non-users. Panel E shows IIEF-EF scores lower than 26 vs at least 26. Panel F shows total. IIEF-EF = International Index of Erectile Function erectile function domain; PDE5 = phosphodiesterase type 5; PE = premature ejaculation.

to 60% of patients who were prescribed paroxetine to treat lifelong PE eventually discontinued the drug. In addition, psychological and behavioral therapy and later the “squeeze” technique were associated with high discontinuation rates.^{9,10} Although topical anesthetic agents were effective in the short term, no long-term data have been reported.¹¹

Dapoxetine is suited for “on-demand” treatment of PE because the drug is rapidly absorbed and has a short initial half-life.¹² The other SSRIs require daily dosing, increasing the risk of class treatment-emergent adverse events. Dapoxetine attains a peak plasma concentration approximately 1.5 hours after dosing compared with 6 hours for fluoxetine and 5 hours for paroxetine.¹³ Then, dapoxetine plasma levels decrease rapidly, to

attain a concentration only 4% that of the peak 24 hours after dosing.¹⁴ Dapoxetine pharmacokinetics is not affected by multiple dosing; the drug does not accumulate to a significant extent.¹³

Several randomized controlled trials have reported on the efficacy and safety of dapoxetine in more than 6,000 patients with PE in more than 25 countries.^{15–18} Integrated analysis of these phase 3 trials showed a significant increase in the geometric mean IELT.⁵ In addition, dapoxetine improved patient-reported outcome measurements compared with placebo.⁵ Dapoxetine also was effective in men with lifelong and acquired PE.^{5,19,20}

Despite these favorable outcomes, treatment discontinuation rates are high. An integrated analysis of clinical dapoxetine trials

Table 1. Patient baseline characteristics and discontinuation rates

	1 mo, n (%)	3 mo, n (%)	6 mo, n (%)	1 y, n (%)	2 y, n (%)	Total, n (%)
PE type*						
Acquired (n = 112)	34 (30.3)	50 (44.6)	16 (14.3)	4 (3.6)	2 (1.8)	106 (94.6)
Lifelong (n = 70)	14 (20)	14 (20)	16 (22.9)	11 (15.7)	3 (4.3)	58 (82.9)
IELT*						
>2 min (n = 72)	25 (34.7)	25 (34.7)	14 (19.4)	7 (9.7)	0 (0)	71 (98.6)
<2 min (n = 110)	23 (20.9)	39 (35.5)	18 (16.4)	8 (7.3)	5 (4.5)	93 (84.5)
Age						
>50 y (n = 92)	28 (30.4)	32 (34.8)	18 (19.6)	5 (5.4)	1 (1.1)	84 (91.3)
<50 y (n = 90)	20 (22.2)	32 (35.5)	14 (15.6)	10 (11.1)	4 (4.4)	80 (88.9)
PDE5 inhibitor status*						
Users (n = 122)	39 (31.9)	50 (40.9)	20 (16.4)	5 (4.1)	1 (0.8)	115 (94.3)
Non-users (n = 60)	9 (15)	14 (23.3)	12 (20)	10 (16.7)	4 (6.7)	49 (81.7)
IIEF-EFD scores*						
≥26 (n = 62)	11 (17.7)	15 (24.2)	10 (16.1)	11 (17.7)	3 (4.8)	50 (80.6)
<26 (n = 120)	37 (30.8)	49 (40.8)	22 (18.3)	4 (3.3)	2 (1.7)	114 (95)
Total (n = 182)	48 (26.4)	64 (35.2)	32 (17.6)	15 (8.2)	5 (2.7)	164 (90.1)

IELT = intravaginal ejaculation latency time; IIEF-EFD = International Index of Erectile Function erectile function domain; PDE5 = phosphodiesterase type 5; PE = premature ejaculation.

* $P < .05$ between two groups at 2 years.

showed that 30.4% of included subjects discontinued mostly because of a perceived lack of efficacy and for personal reasons.⁵ We summarize the dapoxetine discontinuation rates, and the reasons for discontinuation, in recently published articles (Table 3). Although the discontinuation rate varied by study type and duration, it ranged from 1.5% to 89.6%. In the Asia-Pacific Flexible Dose Study of Dapoxetine and Patient Satisfaction in Premature Ejaculation Therapy (PASSION) study by McMahon et al²¹ (a recent work in Asian-Pacific men with PE), more than 80% of subjects reported Clinical Global Impression of Change (CGIC) ratings of “slightly better” at 12 weeks. However, 23.5% of subjects discontinued the drug.

The discontinuation rate in our study was higher than those noted in previous studies. We attribute this to differences in study design (study type and duration). In the phase 3 studies, patients were provided with the drug without cost, and the study durations did not exceed 12 weeks except in the work of Buvat et al¹⁶ (24 weeks; Table 3). Close monitoring, and the fact that the drug was free, might have enhanced compliance. In the real world, patients must pay for drugs and therefore would have high

expectations of efficacy. Moreover, if the medication instructions provided by the pharmacist or the physician were inadequate, then inappropriate use was possible, decreasing drug efficacy. We suggest that these factors led to us recording a higher discontinuation rate than in phase 3 studies. Our finding is similar to those of two studies performed in real-world settings; they were of longer duration than the phase 3 trials.^{4,8} Mondaini et al⁴ reported that 20% of patients with lifelong PE decided not to start dapoxetine treatment and almost 90% of those who initiated treatment discontinued within 1 year. Jern et al⁸ evaluated dapoxetine and paroxetine discontinuation rates, and the prevalence of side effects, in a real-world setting and found that the dapoxetine discontinuation rate was 70.6%.

Turning to the reasons for discontinuation, it was noteworthy that neither adverse events nor lack of efficacy were of major importance (Table 3), unlike what was noted in the phase 3 studies.^{9–11} Open-label observational studies (including ours) showed that high cost, disappointment in the need for continual treatment, and personal reasons were significant for discontinuation.^{4,8} In the present study, cost was the most common reason for discontinuation, followed by disappointment that PE was not a curable disease and that dapoxetine was needed whenever sexual intercourse was contemplated. For the cost of dapoxetine, patients in South Korea cannot be covered by national health insurance for the cost of treating sexual disorders such as ED and PE. Dapoxetine 30 and 60 mg are sold at approximately US\$5.00 and US\$10.00, respectively, which is similar to the price of PDE5 inhibitors. For the patient’s disappointment, we suggest that physicians provide comprehensive counseling at the time of treatment commencement. Patients must understand that dapoxetine helps them to control ejaculation only temporarily and that PE is controllable and not curable. Careful

Table 2. Reasons for discontinuation

Reason	n (%)
Cost	49 (29.9)
Disappointed that PE was not curable and that dapoxetine was always required before sex	41 (25)
Side effects	19 (11.6)
Poor efficacy	16 (9.8)
Seeking other treatment options	9 (5.5)
Unknown	30 (18.3)

PE = premature ejaculation.

Table 3. Comparison of prior studies with the present study

Study	Study description	Treatment duration	Patients, n	Discontinuation rate, %	Reasons for discontinuation (%)
Safarinejad ²³ (2008)	double-blinded, placebo-controlled, fixed-dose, randomized	12 wk	212	12.3	adverse events, lack of efficacy, lost to follow-up
Buvat et al ¹⁶ (2009)	randomized, double-blinded, placebo-controlled phase 3	24 wk	1,162	43 (30 mg)	Subject's choice (21), lost to follow-up (6), adverse event (4), other (12)
				47 (60 mg)	Subject's choice (21), adverse event (8), lost to follow-up (5), other (12)
Kaufman et al ¹⁷ (2009)	randomized, double-blinded, placebo-controlled, phase 3	9 wk	1,238	10	side effects
McMahon et al ²⁵ (2010)	phase 3 double-blinded, parallel-group	12 wk	1,067	1.7 (30 mg), 5.1 (60 mg)	TEAEs
Mondaini et al ⁴ (2013)	prospective observational	1 y	120	89.6	below expectations (24.4), cost (22.1), side effects (19.8), low interest in sex (19.8), no efficacy (13.9)
Lee et al ²⁴ (2013)	prospective, randomized, double-blinded, placebo-controlled	12 wk	57 (dapoxetine 30 mg)	45.6	lost to follow-up (29.8), adverse event (8.8), subject's choice (1.8), protocol violation (5.3)
			63 (dapoxetine 30 mg + mirodenafil 50 mg)	28.6	lost to follow-up (15.9), adverse event (7.9), subject's choice (1.6), protocol violation (3.2)
Mirone et al ²⁵ (2014)	open-label, observational	12 wk	6,712	1.5	side effect
Simsek et al ²⁶ (2014)	open-label, observational	1 mo	150	10	cost (5), side effect (3), effect below expectation (2)
Jiann and Huang ²⁷ (2015)	phase 4, open-label	mean 2.3 ± 2.1 mo (0–9)	314	25.7	poor effectiveness (62.9), cost (45.7)
Jern et al ⁸ (2015)	open-label, observational	mean 13.3 mo	132	70.6	side effects, limited efficacy, cost
Sahin et al ²⁸ (2016)	prospective, randomized, controlled	1 mo	120	6.7 (30 mg)	lost to follow-up (3.3), side effect (3.3)
				10 (60 mg)	side effect (6.7), lost to follow-up (3.3)
Verze et al ²⁹ (2016)	open-label, postmarketing observational	12 wk	6,128	10.9	lost to follow-up (3.5), personal reasons (2.4), insufficient response (1.6), adverse event (1.0)
McMahon et al ²¹ (2016)	open-label	12 wk	285	23.5	withdrew consent (8.1), lost to follow-up (7.4), adverse event (4.63)
Present study	open-label, observational	2 y	182	90.1	cost (29.9), disappointment with on-demand treatment (25), side effects (11.6), effect below expectation (9.8), sought other options (5.5), unknown (18.3)

TEAEs = treatment-emergent adverse events.

counseling along these lines might improve treatment compliance. Although we fully explained the mechanism of action of dapoxetine at the start of treatment, it seems that we did not prevent patients' disappointments during treatment.

Another interesting finding is that, although 79.1% of all patients discontinued treatment within 6 months, the discontinuation rate decreased sharply after 12 months. This is in agreement with the works of Mondaini et al⁴ and Jern et al,⁸ which were performed in real-world settings with follow-up times longer than 1 year. Jern et al⁸ reported that decisions to discontinue were usually made relatively soon after medication commenced; no patient discontinued medication after 30 months of usage. This emphasizes that, to improve compliance, it is essential that patients receive proper counseling, especially before starting treatment and/or in the early treatment period.

We found that patients with acquired PE (vs lifelong PE), with IELTs longer than 2 minutes before treatment, on PDE5 inhibitors, and with IIEF-EFD scores lower than 26 tended to exhibit high dropout rates at the end of the study. If patients with PE and ED on PDE5 inhibitors also took dapoxetine, the costs might have become too burdensome. Moreover, PDE5 inhibitors have been recently suggested to be useful treatments for PE.²² Thus, patients on PDE5 inhibitors might more readily stop dapoxetine treatment. However, unlike what we found, Jern et al⁸ reported that ED was more prevalent among those who continued dapoxetine treatment. Further study is needed on how concomitant PE and ED affect treatment of the other condition.

The high dropout rates of patients with acquired PE and baseline IELTs longer than 2 minutes might be attributable to the fact that their PE symptoms were not as severe as those of patients with lifelong PE and baseline IELTs shorter than 2 minutes; thus, it was easier for the former patients to stop their medication.

Although the dapoxetine discontinuation rate was very high, no SSRI withdrawal syndromes were noted. The common side effects were yawning, nausea, dizziness, and headache. These effects were mild and well tolerated.

To date, dapoxetine remains the only approved medical option for PE. No second-line therapy is available for patients who do not respond to dapoxetine or who refuse to take the drug. Thus, we performed a comprehensive evaluation of factors triggering dropout in real-world practice.

To the best of our knowledge, the present open-label observational study has the longest follow-up period (2 years) reported to date. However, several limitations should be noted. The study design meant that several biases were in play, the first of which was recall bias. We retrospectively collected data on adverse events and the reasons for discontinuation using the telephone or mail. Second, we included only patients who agreed to commence dapoxetine in a single center; we could not evaluate patients who decided not to start dapoxetine when our study was initiated. Therefore, our study population differed from those of the dapoxetine phase 3 trials. Thus, selection and response biases might have been in play.

However, we suggest that our study population was more similar to those encountered by physicians in real-world practice than the populations participating in phase 3 trials.

Although we identified the reasons for dapoxetine discontinuation, we did not analyze the associations between IELT changes and discontinuation rates. We suggest that treatment outcomes can affect compliance and the discontinuation rate. However, our study was purely observational in nature; we did not check the post-treatment IELTs of patients who discontinued treatment. We assessed five parameters: type of PE, baseline IELT, age, use of PDE5 inhibitors, and erectile function. Further studies assessing more parameters in multivariate analysis would be valuable.

CONCLUSIONS

In the present 2-year prospective observational study in a real-world setting, only 9.9% of patients continued treatment to 24 months; 79.1% discontinued within 6 months. Patients with acquired PE (vs lifelong PE), with IELTs longer than 2 minutes before treatment, on PDE5 inhibitors, and with IIEF-EFD scores lower than 26 tended to exhibit high dropout rates. The principal reasons for discontinuation were cost and disappointment with the need for continual treatment, followed by side effects and perceived poor efficacy. These results indicate that a more comprehensive treatment strategy is needed to manage patients with PE.

Corresponding Author: Hyun Jun Park, Department of Urology, Pusan National University Hospital, 1-10, Ami-dong, Seo-gu Busan 602-739, Republic of Korea; E-mail: joon501@naver.com

Conflicts of Interest: The authors report no conflicts of interest.

Funding: None.

STATEMENT OF AUTHORSHIP

Category 1

(a) Conception and Design

Hyun Jun Park; Nam Cheol Park

(b) Acquisition of Data

Tae Nam Kim; Seung Ryong Baek; Kyung Min Lee; Sangmin Choe

(c) Analysis and Interpretation of Data

Hyun Jun Park; Sangmin Choe

Category 2

(a) Drafting the Article

Hyun Jun Park; Nam Cheol Park

(b) Revising It for Intellectual Content

Hyun Jun Park; Nam Cheol Park; Tae Nam Kim

Category 3

(a) Final Approval of the Completed Article

Hyun Jun Park; Nam Cheol Park; Tae Nam Kim; Seung Ryong Baek; Kyung Min Lee; Sangmin Choe

REFERENCES

1. Rowland D, Perelman M, Althof S, et al. Self-reported premature ejaculation and aspects of sexual functioning and satisfaction. *J Sex Med* 2004;1:225-232.
2. Althof SE, McMahon CG, Waldinger MD, et al. An update of the International Society of Sexual Medicine's guidelines for the diagnosis and treatment of premature ejaculation (PE). *J Sex Med* 2014;11:1392-1422.
3. McMahon CG. Current and emerging treatments for premature ejaculation. *Sex Med Rev* 2015;3:183-202.
4. Mondaini N, Fusco F, Cai T, et al. Dapoxetine treatment in patients with lifelong premature ejaculation: the reasons of a "Waterloo". *Urology* 2013;82:620-624.
5. McMahon CG, Althof SE, Kaufman JM, et al. Efficacy and safety of dapoxetine for the treatment of premature ejaculation: integrated analysis of results from five phase 3 trials. *J Sex Med* 2011;8:524-539.
6. Carvalheira AA, Pereira NM, Maroco J, et al. Dropout in the treatment of erectile dysfunction with PDE5: a study on predictors and a qualitative analysis of reasons for discontinuation. *J Sex Med* 2012;9:2361-2369.
7. Salonia A, Rocchini L, Sacca A, et al. Acceptance of and discontinuation rate from paroxetine treatment in patients with lifelong premature ejaculation. *J Sex Med* 2009;6:2868-2877.
8. Jern P, Johansson A, Piha J, et al. Antidepressant treatment of premature ejaculation: discontinuation rates and prevalence of side effects for dapoxetine and paroxetine in a naturalistic setting. *Int J Impot Res* 2015;27:75-80.
9. De Amicis LA, Goldberg DC, LoPiccolo J, et al. Clinical follow-up of couples treated for sexual dysfunction. *Arch Sex Behav* 1985;14:467-489.
10. Hawton K, Catalan J, Martin P, et al. Long-term outcome of sex therapy. *Behav Res Ther* 1986;24:665-675.
11. Andersson KE, Abdel-Hamid IA. Therapeutic targets for premature ejaculation. *Maturitas* 2011;70:26-33.
12. McCarty E, Dinsmore W. Dapoxetine: an evidence-based review of its effectiveness in treatment of premature ejaculation. *Core Evid* 2012;7:1-14.
13. Modi NB, Dresser MJ, Simon M, et al. Single- and multiple-dose pharmacokinetics of dapoxetine hydrochloride, a novel agent for the treatment of premature ejaculation. *J Clin Pharmacol* 2006;46:301-309.
14. Andersson KE, Mulhall JP, Wyllie MG. Pharmacokinetic and pharmacodynamic features of dapoxetine, a novel drug for 'on-demand' treatment of premature ejaculation. *BJU Int* 2006;97:311-315.
15. McMahon C, Kim SW, Park NC, et al. Treatment of premature ejaculation in the Asia-Pacific region: results from a phase III double-blind, parallel-group study of dapoxetine. *J Sex Med* 2010;7:256-268.
16. Buvat J, Tesfaye F, Rothman M, et al. Dapoxetine for the treatment of premature ejaculation: results from a randomized, double-blind, placebo-controlled phase 3 trial in 22 countries. *Eur Urol* 2009;55:957-967.
17. Kaufman JM, Rosen RC, Mudumbi RV, et al. Treatment benefit of dapoxetine for premature ejaculation: results from a placebo-controlled phase III trial. *BJU Int* 2009;103:651-658.
18. Pryor JL, Althof SE, Steidle C, et al. Efficacy and tolerability of dapoxetine in treatment of premature ejaculation: an integrated analysis of two double-blind, randomised controlled trials. *Lancet* 2006;368:929-937.
19. Jannini EA. Editorial comment on: Dapoxetine for the treatment of premature ejaculation: results from a randomized, double-blind, placebo-controlled phase 3 trial in 22 countries. *Eur Urol* 2009;55:967-968.
20. Porst H, McMahon CG, Althof SE, et al. Baseline characteristics and treatment outcomes for men with acquired or lifelong premature ejaculation with mild or no erectile dysfunction: integrated analyses of two phase 3 dapoxetine trials. *J Sex Med* 2010;7:2231-2242.
21. McMahon C, Lee SW, Kim SW, et al. The Asia-Pacific Flexible Dose Study of Dapoxetine and Patient Satisfaction in Premature Ejaculation Therapy: the PASSION study. *Sex Med* 2016;4:e18-e27.
22. Castiglione F, Albersen M, Hedlund P, et al. Current pharmacological management of premature ejaculation: a systematic review and meta-analysis. *Eur Urol* 2016;69:904-916.
23. Safarinejad MR. Safety and efficacy of dapoxetine in the treatment of premature ejaculation: a double-blind, placebo-controlled, fixed-dose, randomized study. *Neuropsychopharmacology* 2008;33:1259-1265.
24. Lee WK, Lee SH, Cho ST, et al. Comparison between on-demand dosing of dapoxetine alone and dapoxetine plus mirodenafil in patients with lifelong premature ejaculation: prospective, randomized, double-blind, placebo-controlled, multicenter study. *J Sex Med* 2013;10:2832-2841.
25. Mirone V, Arcaniolo D, Rivas D, et al. Results from a prospective observational study of men with premature ejaculation treated with dapoxetine or alternative care: the PAUSE study. *Eur Urol* 2014;65:733-739.
26. Simsek A, Kirecci SL, Kucuktopcu O, et al. Comparison of paroxetine and dapoxetine, a novel selective serotonin reuptake inhibitor in the treatment of premature ejaculation. *Asian J Androl* 2014;16:725-727.
27. Jiann BP, Huang YJ. Assessing satisfaction in men with premature ejaculation after dapoxetine treatment in real-world practice. *Int J Clin Pract* 2015;69:1326-1333.
28. Sahin S, Bicer M, Yenice MG, et al. A prospective randomized controlled study to compare acupuncture and dapoxetine for the treatment of premature ejaculation. *Urol Int* 2016;97:104-111.
29. Verze P, Cai T, Magno C, et al. Comparison of treatment emergent adverse events in men with premature ejaculation treated with dapoxetine and alternate oral treatments: results from a large multinational observational trial. *J Sex Med* 2016;13:194-199.